

Flatbed range

Digital cutters for on demand applications



Tabbed dividers



Shaped wedding stationery



Intricate wallets and folders



Contour cut mailers



Premium cosmetics packaging



Hotel key card pouches

Cut absolutely any shape ColorCut flatbeds

Designed in the UK, beautifully engineered, totally accurate and highly affordable. The Intec ColorCut flatbed series defines a new industry standard.

Perfect for light to medium run production of two and three dimensional items, the ColorCut series offers a range of machines to suit the cutting and creasing of virtually any form of print, from cardboard packaging for high-end products and protective cartons – to synthetic point-of-sale items and kiss-cut adhesive labels. The ability to digitally produce single items on demand, also makes the ColorCut perfect for prototyping.

Bespoke, market-leading software brings many advanced features to aid design and production.



Flatbed cutting & creasing



No matter whether you produce 2D point-of-sale and labels or 3D packaging and displays – ColorCut flatbed cutting tables will perform effortlessly, and on demand.

Cartons, packaging, point of sale & kiss cut labels - all with one system!

ColorCut flatbeds come complete with a selection of cutting blades and mats to suit a wide range of materials being cut including lightweight papers, cards, label stock and synthetic substrates.

Create stunning packaging with superb creasing and crisp cut lines/perforations on heavier-weight stocks for items such as luxury product packaging, gift boxes, utility packing and much more by using the supplied

superior grey felt cutting mat and industrial circlip blades (included with every flatbed) making it suitable for use with heavier-weight materials.

Perfect kiss-cut labels, interior and exterior point-of-sale, novelty greetings cards and vinyl decals can also be produced when used in conjunction with the provided self-healing cutting mat.

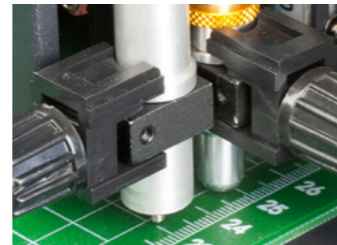
Card & film up to 600 micron
Cut, crease, perforate and score
100% digital - no dies required
Wide choice of models from SRA3 to B1 cutting tables



Seriously better. ColorCut flatbed cutters

ColorCut flatbeds have been designed and developed to deliver the accuracy, speed, ease-of-use and reliability demanded by serious print professionals.

Intec Printing Solutions has invested in producing a class-leading system, which will keep pace with industry advancements and deliver *beyond* expectations. ColorCut owners are buying into a future-proof system that will not only evolve and grow with industry requirements - but deliver additional and unique profit-making opportunities.



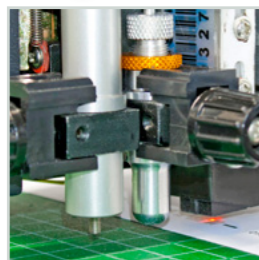
Engineered for reliability. Designed in the UK, the ColorCut flatbed range has a pedigree of solid engineering, robust mechanical parts, the latest high-tech electronics and simplicity of use - all at an extremely affordable price point!

Digital die cutting. Using advanced digital contour cutting technology, the flatbed tools follow artwork

cut and crease lines drawn in Adobe® Illustrator® or CorelDRAW® - no need to purchase and wait for traditional dies to be made.

Deliver on demand. Cuts a typical SRA3 sheet in just 30 - 60 seconds. This enables users to easily and affordably produce anything from as little as one or as many as 1,000 sheets per day.

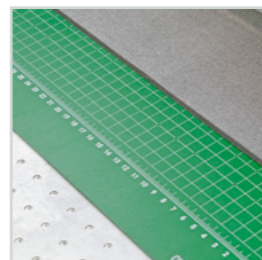
Uniquely ColorCut



1. Dual tool head delivers class-leading 1kg force to both the crease and cut tools



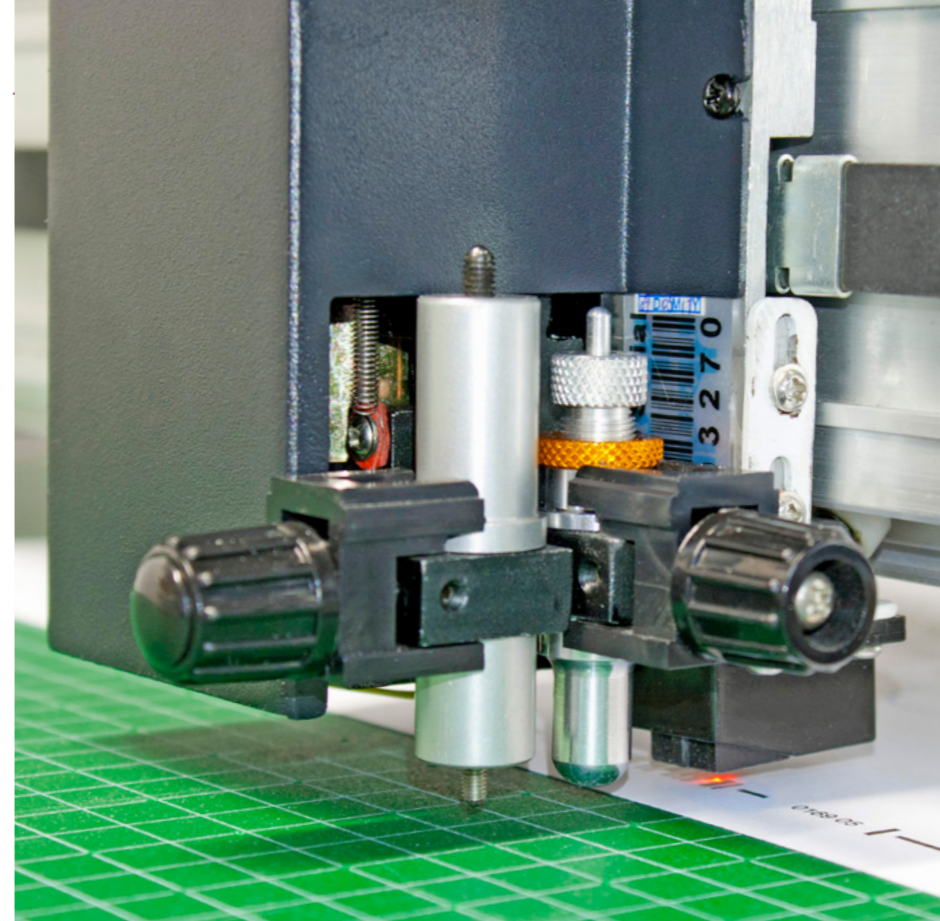
2. Job coding revolutionises functionality and cut line filing



3. Vacuum hold down table with choice of cutting mats



4. Immersive 5" touch screen control panel



Vacuum hold down table. Sheets are held securely in place on either a green self-healing or superior grey felt cutting mat, by a vacuum which is produced by a powerful centrifugal pump. Suction passes through the perforated hold down table and the mat, keeping sheets flat and secure.

Job sensing. Perfect registration of the printed sheets to the desired cut line is guaranteed by the presence of an optical sensor or CCD camera, which reads page marks and barcode/QR code (see software section), and enables the dual tool head to follow the path of drawn vector lines.

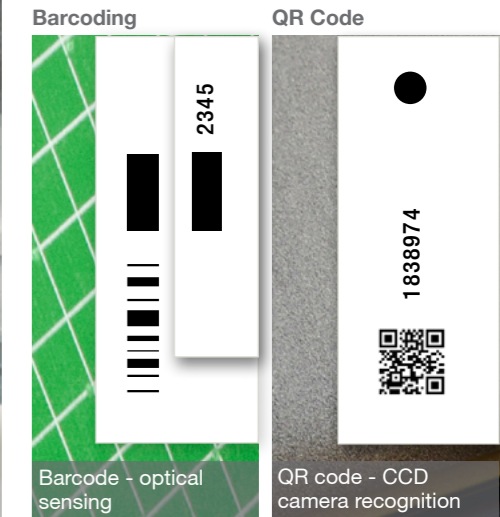
Batch productivity. Multiple sheets can be placed on the cutting mat and with the control settings designated to 'batch productivity', ColorCut will proceed to work on each sheet in turn - thus speeding productivity even further!

Dual tools with 1kg force! Delivering twice the pressure of other models in its class, the ColorCut flatbeds use a dual tool head where both tools operate independently from each other, for all functions, reducing operation time and improving productivity. The creasing tool is double-ended, offering a choice of wide or narrow crease, as required.

Fingertip control. The intuitive touch screen control panel integrates with ColorCut Pro and display's easy to follow instructions, ensuring operators are able to respond effectively to system requirements.

High power vacuum included. All Intec ColorCut flatbeds come with an extremely powerful centrifugal air pump which provides the power, to hold down printed sheets, onto the cutting table. An auto cut-off feature announces the end of each cut sheet. The pump is housed within an attractive, purpose made acoustic housing and supplied with an effective muffler*.

*optional for the FB550 model



colorCUT pro
Digital Die Cutting for Intec

ColorCut Pro 3 software

ColorCut Pro has been developed exclusively by Intec to work the way you work - no new software to learn when designing your jobs - and offers key productivity features to deliver exactly the kind of user experience that we know the print finishing industry demands. We offer two working modes within the ColorCut Pro application and the mode used is model dependent.

Barcode Mode - FB550 and FB750 Job barcoding. The generation of job barcodes revolutionises the production and filing process. ColorCut Pro can automatically create a barcode specifically dedicated to an individual cut file and add it to the print PDF. When the flatbed's optical sensor reads the barcode on the printed sheet, ColorCut Pro automatically pulls that file up on screen, ready to cut.

This system works with the FB550 and FB750 flatbed models.

QR Code Mode - FB1150 QR code reading. This is a progressive and exciting development of ColorCut Pro software. The flatbed utilises 7th generation ARMS technology with an on board Vision3 CCD video camera, scanning the QR code, to instantly retrieve the associated cut/crease file and read SmartMarks for perfect registration.

This system works with the FB1150 flatbed and other Intec auto feed finishing solutions.

Model selector

A flatbed to suit all applications
ColorCut model options

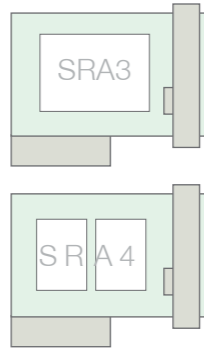
Depending upon typical job type, run volumes and physical space, there's a ColorCut flatbed to suit virtually all users.

Full system specifications available on rear of brochure.



ColorCut Pro Server Station available to house ColorCut Pro software to run all Flatbeds

FB550



Market position Ideal for small commercial printers, graphic design, media and marketing companies or inplants seeking to cut and crease on SRA3 or up to 350mm x 488mm sheets for on demand applications. Produce one offs or hundreds of boxes for prototypes, packaging, greetings cards - also suitable for kiss-cut label sheets.

Supplied with double-ended creasing tool and an adjustable cutting tool - which accepts a range of blades for different media types.

Add the optional silencer for a whisper quiet working environment.

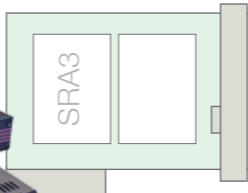
MODEL FEATURES FB550

Maximum media area	350mm x 520mm
Effective contour cutting area	330mm x 488mm
Cutting force	960gf
Dual tool functionality	Blade holder and crease tool
Registration system	High resolution optical IR sensor using 6th Generation ARMS technology
Job recognition	Job barcoding for cut file recognition, retrieval from job library and registration

GENERAL

Media hold-down method	400W Vacuum suction
Acoustic cover for vacuum pump	Yes
Silencer	Optional
Stand	Included
Weight	69kg
Dimensions* L x W x H†	890 x 880 x 1020mm

FB750



Market position With a larger cutting table, the FB750 can handle B2 folders, and larger sheets. However, it's the combination of the aggressive price point along with the ability to place 2 x SRA3 sheets next to each other (or 4x SRA4), for light production applications, which enables users to achieve higher productivity. With less time taken placing sheets on the table, this cutter is a very popular model.

Also includes a higher power 750W vacuum bed, to cut a wider range of media and an acoustic muffler, to ensure the flatbed comfortably fits within any work environment.

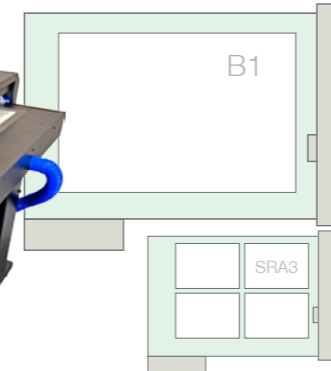
MODEL FEATURES FB750

Maximum media area	475mm x 670mm
Effective contour cutting area	456mm x 640mm
Cutting force	960gf
Dual tool functionality	Blade holder and crease tool
Registration system	High resolution optical IR sensor using 6th Generation ARMS technology
Job recognition	Job barcoding for cut file recognition, retrieval from job library and registration

GENERAL

Media hold-down method	750W Vacuum suction
Acoustic cover for vacuum pump	Yes
Silencer	Included
Stand	Included
Weight	82kg
Dimensions* L x W x H†	988 x 1013 x 1020mm

FB1150



Market position With the largest cutting table in the range, the FB1150 handles sheets up to B1+ (760mm x 1060mm), with a maximum effective cutting area of up to 740 x 1040mm, ideal for cutting larger B1 sheets from inkjet or printing press applications.

The FB1150 comes with an upgraded registration system to include 7th generation ARMS sensing, for faster job retrieval and 300% faster job registration, making it great for multiple sheet cutting; the Vision3 CCD camera will auto find the position of each sheet. The flatbed comes with a powerful 1000w fan for maximum sheet suction ensuring 4 x SRA3 sheets can be comfortably placed next to each other.

MODEL FEATURES FB1150

Maximum media area	760mm x 1060mm
Effective contour cutting area	740mm x 1044mm
Cutting force	960gf
Dual tool functionality	Blade holder and crease tool
Registration system	High speed - Vision3 CCD camera using 7th Generation ARMS technology
Job recognition	Advanced QR code for instant job recognition and registration

GENERAL

Media hold-down method	1000W Vacuum suction
Acoustic cover for vacuum pump	Yes
Silencer	Included
Stand	Included
Weight	109kg
Dimensions* L x W x H†	1380 x 1280 x 990mm

See full range specification table on back page

Note to all devices:
* Dimensions reflect full extremities of each device.
† Height to cutting table top surface 860mm. (plus height to top of beam - variable)
(Height dimensions: +/- 20mm owing to adjustable feet).





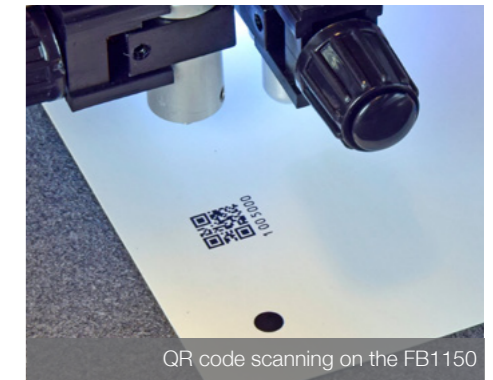
Take full control with ColorCut Pro software

Intec has produced a bespoke suite of dedicated software that is supplied for all ColorCut flatbed cutting tables. Developed to optimise their contour cutting capabilities and help users cut projects with simplicity and precision.

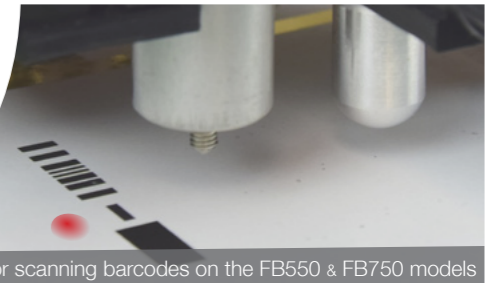
Making production tasks, easy!

- No new drawing program to learn
- ColorCut Pro accepts vector lines directly from Adobe Illustrator & CorelDRAW
- Line colours identification
- Material/Action Database
- Control tools speed & force using SmartLine colour
- Productivity mode enables multiple sheet cutting
- Generate and assign barcodes or QR codes to jobs, saving the cutting file to the job database for retrieval later

- A computer plugin that adds registration marks and either barcodes or QR codes for Adobe Illustrator (Mac & PC) and / or CorelDRAW (PC)
- Cut with or without registration marks
- Customisable registration mark and barcode/QR code position
- Automatic sensor calibration
- High tolerance to variation in brightness, for coloured media or white marks on dark paper
- Software automatically adjusts for print scale, skew or position errors up to 5mm
- Automatically turns off vacuum after cutting
- Application environment works in mm or inches
- Cutting interface can be independent of user's drawing program



QR code scanning on the FB1150



IR sensor scanning barcodes on the FB550 & FB750 models

Bespoke software

ColorCut Pro explained

ColorCut Pro is a stand-alone application with a plugin, that can be installed on remote computers anywhere within the workflow environment, to perform contour cutting of paper card and synthetics. Intec offers a complete turnkey solutions because we manufacture both the hardware and develop the software for our range of ColorCut flatbed machines.

For creatives the application enables artworkers to generate barcoded or QR coded cut files with associated job numbers, as an integral part of their design, for instant job recognition and file retrieval.

For print finishers the ColorCut Job Library enables users to retrieve previously prepared cut files into their workflow, without the need to launch Adobe® Illustrator® or CorelDRAW®. This is typically used in a production environment, remote from the design studio.

Software development. Intec currently offers two modes within its ColorCut Pro 3 software, both delivering the same operator functionality but differing in the way its generates and reads the data. **ColorCut Pro 3** automatically generates either a barcode, for the FB550 and FB750 using an on board optical sensor or a QR code, for the FB1150 with on board Vision3 CCD camera, to read and cut digital files.

The software is supplied with each flatbed cutter and fully integrates with the leading drawing packages; Adobe Illustrator and CorelDRAW.

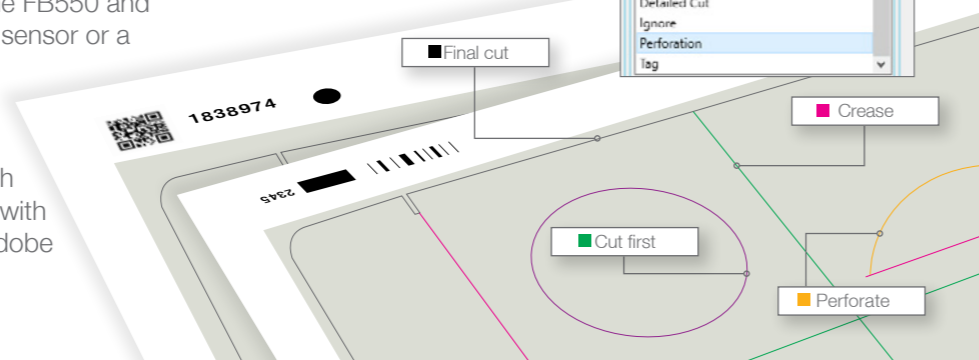
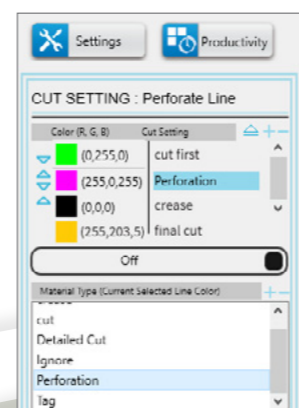
Contour cut with ColorCut Pro

The on board sensor/camera reads the generated barcode or QR code on each printed sheet and retrieves the associated cutting file from the ColorCut Pro Job Library. The user can also key-in the job number to pull up cut files should there be a need to remove these from the printed sheet for artworking purposes.

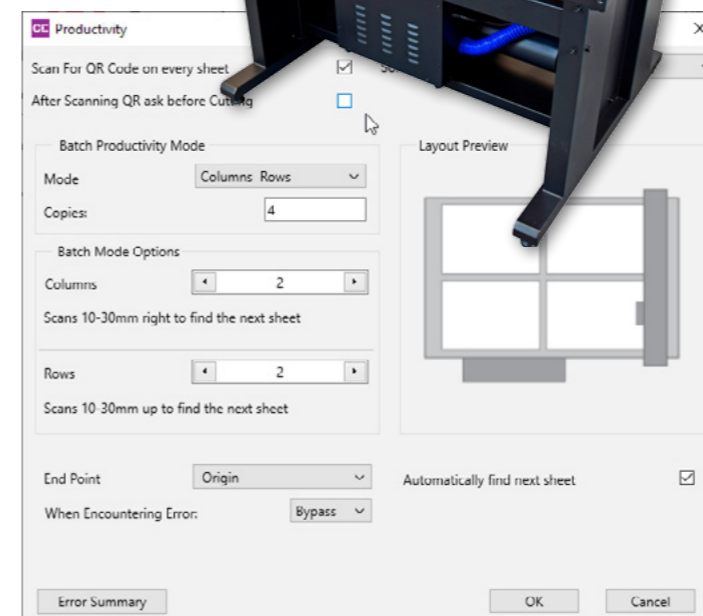
The on board sensor/camera also reads the registration SmartMarks for positional accuracy. Advanced features compensate for print skew or positioning skew to ensure precise cut registration.

Create and modify. Being fully integrated with Adobe Illustrator and CorelDRAW, ColorCut Pro allows users to re-open artwork that requires design elements to be edited. Once edited, simply recreate a new cut file and its data at a keystroke.

Colour recognition. Working with vector lines in the design, it is possible to set-up cutting/creasing processes using different line colours. This feature recognises different colours and allows users to set types of operation and the sequence, by colour.



Productivity controls for production runs. Multiple sheets can be placed on the table at the same time and ColorCut Pro can be set to search for each sheet and cut it - improving productivity.



Material database. It's possible to assign a tool; cutting or creasing, along with tool speed and pressure for each action or material used. This enables users to achieve precisely the correct control for each task. Settings can be saved so users can quickly and easily recall them for future jobs.

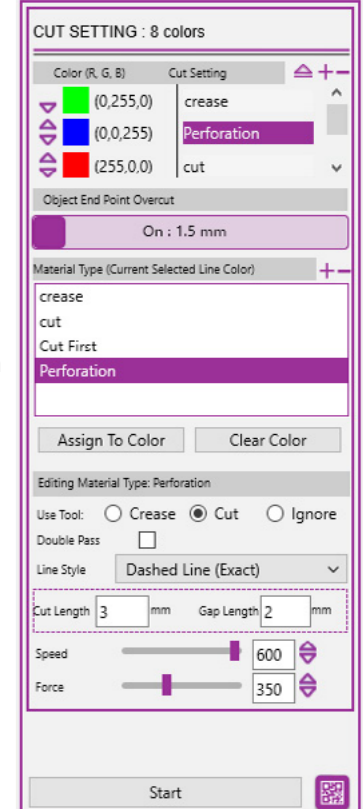
Smart Line control. There is no need to draw different types of lines in your artwork, such as dotted or dashed. Using a solid vector line is all that is required.

By specifying given lines in certain colours, ColorCut Pro can be used to designate the required tasks to each line colour i.e. red to cut, blue to perforate, green to crease etc. For complex designs it is possible to change the cutting sequence and order - for example; cut all hanging slots as the first task, perforate the dispensing hole second task, perform all creasing next or cut outer shape as final task, etc. This feature can also be used to good affect if the finished item is to be retained within the sheet - simply set the final cut task to contain small 'tags' to hold the design in place.

Origin the sensor and click start. With ColorCut Pro 3, once the cutting head is positioned on the first registration mark and the origin point is set, the flatbeds sensor will automatically detect the sheet's 2nd, 3rd and 4th registration marks and compensate for any scale, skew or positional errors - cutting will then automatically start.

colorCUT pro

Digital Die Cutting for Intec





Dual headed creasing tool

Blade holder

Pen calibration tool



ColorCut Pro user manual supplied with all cutters and available to download from intecprinters.com

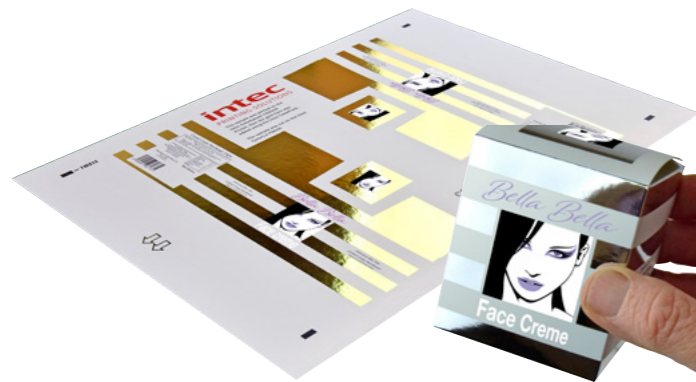


Dual tools head delivers 1kg of force per tool

Comprehensive range of tools and accessories ColorCut

As you'd expect from a serious production system, many of the parts are available as replacements.

A full range of original manufacturer parts and accessories are available for after-market purchase. Spares can be purchased at time of ordering the flatbed and/or shipped overnight as and when required.



Tools & accessories

Server Station - Intec's ColorCut Pro Server Station includes a powerful workstation, integrated into an ergonomic stand with a convenient work platform. This makes a compelling addition to any environment with Mac or PC users, who require a dedicated turnkey solution as a job library & production server for job processing.

The Server Station is pre-installed with ColorCut Pro's Job Library feature, enabling Mac and PC users to send their cut jobs from the ColorCut Pro client, directly to the Server Station and then continue working, whilst the ColorCut Pro Server Station acts as the focal hub for the production and cutting of all jobs.

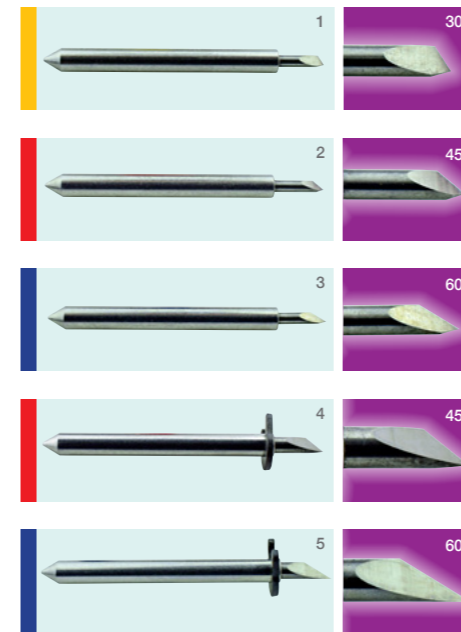
Running a standalone version of ColorCut Pro Server Station, ensures users can access all jobs saved to the ColorCut Pro Job Library at any time, without requiring Adobe Illustrator or CorelDRAW and without having to re-open the original file.

- Mac or PC systems running ColorCut Pro, can transfer cut files over the network to the ColorCut Pro Job Library on the Server Station.



Supplied complete with 20" flat screen Windows® operating system, pre-installed with ColorCut Pro software.

- Assigned job numbers, barcodes or QR codes enable instant retrieval of the associated cutting file
- Designers can adjust cutting file settings without having to re-open the original design and artwork file
- No skilled operators required. ColorCut Pro stands alone, which means cutting operatives do not require access to Adobe Illustrator or CorelDRAW in order to cut jobs.



1. 30° blade 2. 45° blade 3. 60° blade
4. 45° circlip knife 5. 60° circlip knife

Cutting blades. These ultra-sharp and hard-wearing blades come in two types and three blade angles. Either as a pack of three the same or as a mixed pack.

Blades:

- Yellow** 30° 1mm ø - For film, very soft material, thin label material
- Red** 45° 1mm ø - Typically for labels, stickers, and thin paper/card
- Blue** 60° 1mm ø - For thick media. Sharply angled tip provides a longer cutting edge, for cutting media from 0.5 to 1.5 mm thick

Circlip blades:

- Red** 45° 1.4mm ø - Most packing board up to 500 micron. Circlip provides better pressure and improves blade direction changes on dense media, from 0.25 to 0.5 mm thick
- Blue** 60° 1.4mm ø - For thick media. Sharply angled tip provides a longer cutting edge, for cutting media from 0.5 to 1.5 mm thick

Creasing tool. This tool is double-ended, offering a choice of tips for either wide or narrow creases, as desired. Again, precision engineered this tool sits in the dual tool head.

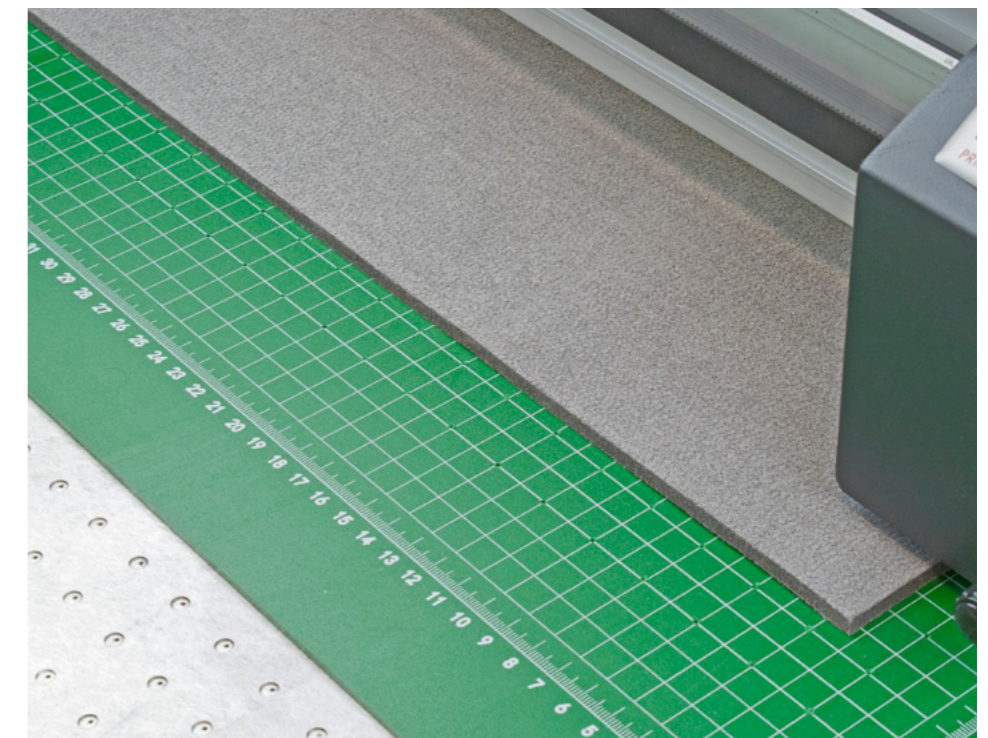
Cutting tool. This precision engineered component sits in the dual tool head and holds the cutting blade of choice. The tool is manually adjustable to obtain the desired amount of 'blade out' for the job in hand.



Calibration tool. Used at set up and then periodically, to calibrate the cutter.

Cutting mats. Green self-healing mat is manufactured from a particular rubberised compound enabling blades to sink into its surface without causing surface damage. This mat is ideal for obtaining crisp cuts on thinner materials. Vacuum suction flows through the perforations to hold printed sheets in position.

The grey felt mat is perfect for achieving deeper creasing lines and cuts on thicker substrates. The natural density of the fibres allows the vacuum flow to pass through it for sheet retention.



Vacuum pump. Powerful vacuum pump with mobile acoustic housing, powers vacuum retention of printed sheets to cutting mat.



Acoustic silencer. Reduces sound level of vacuum pump.

Specifications



Intec ColorCut Flatbed digital die cutter series

Model	FB550	FB750	FB1150
POSITION			
Market position	Prototype and light production, on-demand packaging and sheet card cutting system – also suitable for sheet labels		
CUT AREA			
Maximum media area	350mm x 520mm	475mm x 670mm	760mm x 1060mm
Effective contour cutting area	330mm x 488mm	456mm x 640mm	740mm x 1040mm
Stand	Included	Included	Included
Media hold-down method	400W Vacuum suction	750W Vacuum suction	1000W Vacuum suction
Acoustic cover for vacuum pump	Yes	Yes	Yes
Silencer	Optional	Included	Included
CUTTING CONTROL			
Mountable tools	Dual tool functionality, 3 tools supplied as standard: Blade holder, creasing tool & pen tool		
Available tools	Blades:	Yellow - 1mm 30° cemented carbide blade - for thin film and very soft material	
		Red - 1mm 45° cemented carbide blade - for adhesive stickers, thin card under 0.25mm	
		Red - 1.4mm 45° circlip cemented carbide blade - for cutting media from 0.25 to 0.5mm thick	
		Blue - 1mm 60° cemented carbide blade - for thick media, sharply angled tip provides a longer cutting edge - suitable for cutting media from 0.5 to 1.5 mm thick (restricted by maximum limit of flatbed)	
		Blue - 1.4mm 60° circlip cemented carbide blade - for cutting high-intensity reflective film	
	Creasing tool:	≤500gsm cardboard, textured & corrugated paper	
	Pen holder:	Pen, plotting pen, also used for calibration sensor	
Cutting system	up to 960gf delivered in 4g/step intervals through Intec ColorCut control panel		
Mechanical resolution	0.01254mm	0.01254mm	0.01254mm
Programmable resolution	HPGL 0.025mm	HPGL 0.025mm	HPGL 0.025mm
Max cutting depth	0.60mm	0.60mm	0.60mm
Max cutting weights	Paper:	Cuts weights up to 600 micron/gsm. Crease up to 960gf	
	Other substrates:	Paper/card less than 450gsm, PVC - less than 0.4mm, PET - less than 0.3mm, magnetic sticker - less than 600 micron	
Max speed	600mm/s		
SOFTWARE & CONNECTIVITY			
ColorCut	ColorCut Pro 3 (Barcode sensing)	ColorCut Pro 3 (Barcode sensing)	ColorCut Pro 3 (QR Code sensing)
ColorCut Pro	Yes (Mac* and PC)	Yes (Mac* and PC)	Yes (Mac* and PC)
ColorCut Pro compatibility	PC: Direct Plugin to: Adobe® Illustrator® (all versions), CorelDRAW® X3 - X8 - Mac: Adobe® Illustrator® CC 2018 onwards		
File formats	ColorCut Pro is a plugin for Adobe® Illustrator® & CorelDRAW® (requires either app) and works with native CorelDRAW® or CorelDRAW® EPS files and native Adobe® Illustrator® files. (ColorCut Pro, cuts directly from Adobe® Illustrator® or CorelDRAW®)		
Connectivity	*Cutter driven by PC only. USB (1 connection to PC is required). Mac users use ColorCut Pro to link to PC Job Library for cutting		
REGISTRATION CONTROL			
Registration system	High resolution optical registration system which reads the registration marks on the media and compares the position with the original value from the digital file. The Intec ColorCut Pro software then acts accordingly to correct linear and angular positional differences by automatically adjusting the cut lines		Advanced 7th generation ARMS (Automatic Registration Mark sys.) Vision3 sensor includes CCD camera & instant auto job recognition + WiFi Preview
POWER REQUIREMENTS			
Voltages (cutter)	100V-240V auto switching	100V-240V auto switching	100V-240V auto switching
Power (cutter)	200W, 3.0A		
Voltages (vacuum pump)	110V or 220V (Voltage specific)		
Power (vacuum pump)	400W, 110V / 3.9A (vacuum)	750W, 110V / 10.8A (vacuum)	1000W, 110V / 16.5A (vacuum)
	400W, 230V / 2.7A (vacuum)	750W, 230V / 4.5A (vacuum)	100W, 240V / 9A (vacuum)
Approvals	UL, c-UL certified. Complies with CE and RoHS directive, VCCI Class A, FCC Class A, EN55022 Class A		
GENERAL			
Weight (unpacked)	69kg	82kg	109kg
Dimensions* (unpacked) L x W x H†	868 x 761 x 1020mm	988 x 1013 x 1020mm	1312 x 1305 x 1020mm
Weight (crated)	102kg	129kg	165kg
Dimensions (crated) L x W x H	1180 x 900 x 560mm	1390 x 1010 x 570mm	1580 x 1410 x 590mm

* Dimensions reflect full extremities of each device. † Height to cutting table top surface 860mm. Height to top of beam = 1020mm. (Both height dimensions +/- 20mm owing to adjustable feet).